

1 Udon & Soba UENO PARK RESTAURANT



11:00~15:00
Closed irregularly
TEL 0595-21-2730
117-3 Ueno Marunouchi, Iga
¥700 - ¥950
Seats 50

MAP-A

2 Farmers Café Restaurant YUMEKASSAI



8:00~16:00
(Last order 15:00)
Closed on Wednesdays
TEL 0595-23-4332
128 Ueno Marunouchi, Iga
¥800 - ¥1,500
Seats 30

MAP-B

3 Dengakuza WAKAYA



11:00~14:00
(Last order 14:00)
17:00~20:00
(Last order 19:30)
Limited Supply
Closed on Mondays (Closed Tuesday and
open Monday if Monday is a national holiday)
TEL 0595-21-4068
3591 Ueno Nishiohtechu, Iga
¥1,000 - ¥3,000
Seats 80

MAP-A

Iga Castle Town Oishii Map



Shrine Temple Wheelchair Accessible Parking Lot Restroom School Information Center Ninja Outfit Rental
1~5 1~5 The numbers listed in the symbols match with the initial numbers of lists in this guide. Information as of March 01, 2017

Closed

Business Hours Closed
Average Price
Seating Capacity
Kid's Menu
Non-smoking
Smoking
Wi-Fi

CARD
VISA MasterCard
AMEX JCB
銀聯

11 Sukiyaki KANAYA



11:00~20:30
(Last order 19:30)
Closed on Mondays (Closed Tuesday and
open Monday if Monday is a national holiday)
TEL 0595-21-0105
434 Ueno Nohninmachi, Iga
¥8,000 - ¥9,000
Seats 180

MAP-B

12 Pasta & Casual Italian Restaurant ALBERGO YAOSHIN



11:00~15:00
(Last order 14:30)
18:00~23:00
(Last order 22:00)
Saturdays 11:00~23:00
(Last orders 22:00)
Sundays and Holidays
11:00~22:00 (Last orders 21:00)
Closed on 3rd Wednesday of each month
TEL 0595-21-6849
2988 Ueno Nakamachi, Iga
¥2,400 - ¥7,200
Seats 53

MAP-A

Closed

5 Udon & Japanese Casual Dining NIKAKU SHOKUDO



11:00~15:30
(Last order 15:00)
17:00~22:00
(Last order 21:30)
Closed on Tuesdays & 4th Wednesday
of each month
TEL 0595-21-1609
42-9 Ueno Marunouchi, Iga
¥800 - ¥2,000
Seats 52

MAP-B

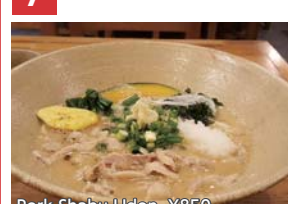
6 Café Restaurant 7TH AVENUE



8:00~19:00
Lunch 11:00~15:00
Closed on Tuesdays
TEL 0595-23-7750
1F La Foret Building,
28 Ueno Marunouchi, Iga
¥800 - ¥1,500
Seats 26

MAP-A

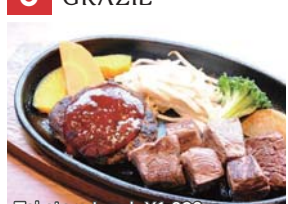
7 Udon KYUAN



11:00~15:00
Closed on Wednesdays
Limited Supply
TEL 0595-21-5859
23 Ueno Marunouchi, Iga
¥500 - ¥1,050
Seats 23

MAP-B

8 Stakehouse GRAZIE



11:00~14:00
17:00~21:30
(Last order 21:00)
Closed on Tuesdays
TEL 0595-51-0783
500 Ueno Marunouchi, Iga
Lunch ¥2,000 - ¥2,500
Dinner ¥4,000 - ¥5,500
Seats 65

MAP-B

9 Pizza Bar CORNICIONE



11:30~14:00
(Last order 14:00)
17:30~23:00
(Last order 22:00)
Closed on Mondays (Closed Tuesday and
open Monday if Monday is a national holiday)
TEL 0595-51-8856
2934-11 Ueno Higashimachi, Iga
¥1,000 - ¥3,000
Seats 12

MAP-B

13 Udon IKEZAWAYU



11:00~14:00
Closed on Wednesdays
TEL 0595-23-2351
3045-1 Ueno Kodamacho, Iga
¥450 - ¥800
Seats 20

MAP-A

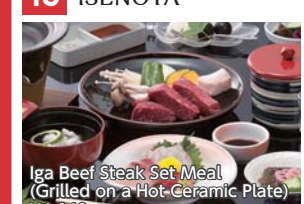
14 Japanese tea, green tea soft cream MURAI BANKOEN



9:00~20:00
(Last order 19:00)
Closed on Thursdays
(but not every week, irregularly)
TEL 0595-21-1173
3130 Ueno Kodamacho, Iga
¥300 - ¥780
Seats 20
Designated areas
outside the shop

MAP-A

15 Japanese Cuisine ISENOYA



11:00~13:30 (Last entry)
17:00~19:30 (Last entry)
Closed irregularly
TEL 0595-21-0136
3277-18 Ueno Tokuicho, Iga
Lunch ¥1,620
Dinner ¥3,780-
Seats 40

MAP-C

16 Iga Ramen BUNGADO



11:00~14:15
(Last order 14:00)
17:00~23:00
(Last order 22:30)
Closed on Mondays (Closed Tuesday and
open Monday if Monday is a national holiday)
TEL 0595-21-4077
2560 Ueno Shinobicho, Iga
¥680 - ¥1,000
Seats 23 Available
Non-smoking at lunch time
(11:00 - 13:00)

MAP-D

17 Japanese Cuisine RYORIKI



11:30~14:00
(Last order 13:30)
17:00~21:00
(Last order 20:00)
Closed irregularly
TEL 0595-21-0132
1596 Ueno Ebisucho, Iga
¥1,000 - ¥5,000
Seats 20

MAP-D

Hill Hotel Sunpia Iga	☑ Check in 14:00 ☑ Check out 10:00 ☑ Breakfast incl. ¥7,580~14,400 ☑ All rooms no charge	card TEL 0595-24-7000 2756-104 Saimyoji, Iga (10 min. by car from Uenoshi Station on Iga Tetsudo Line) http://www.hh-sunpia-iga.co.jp/	
Aoyama Garden Resort Hotel Rosa Blanca	☑ Check in 15:00 ☑ Check out 11:00 ☑ ¥14,800 - 22,120 ☑ Lobby only	card TEL 0595-52-5586 21 Terawaki, Iga (10 min. by free shuttle bus from Iga-Kambe Station on Kintetsu Line/IgaTetsudo Line) http://hotel-rosablanca.com/	
Ueno Frex Hotel	☑ Check in 15:00 ☑ Check out 11:00 ☑ ¥4,000 - 10,000 ☑ All rooms no charge	card TEL 0595-21-3111 544-2 Hirano Nakagawara, Iga (10 min. by taxi from Uenoshi Station on Iga Tetsudo Line) http://www.uenofrexhotel.co.jp/	
Route-Inn Grantia Iga Ueno Wakura no Yado	☑ Check in 15:00 ☑ Check out 10:00 ☑ ¥6,500 - 7,500 ☑ All rooms no charge	card TEL 0595-26-1011 1-131 Ueno Marunouchi, Iga (2 min. walk from Nishi-Ote Station on Iga Tetsudo Line) http://www.hotel-grantia.co.jp/igaueno/	
			MAP-A

Useful information

- 1

Withdrawing in Japanese Yen available at Japan Post Bank ATMs
Japan Post International ATM Service

MAP-B
- You can withdraw money with the credit card or the cash card published by the overseas institution at Japan Post Bank ATMs.

Location Ueno Post office

ATM Operating Hours
Weekdays/8:45-19:00
Weekends and Holidays/9:00-17:00
- 2

Coin-Operated Lockers

MAP-B
- Location** Within Uenoshi Station

Hours 5:30-23:25

●small:¥300/day ●Medium:¥500/day
●Large:¥600/day
-

- 5

Money Exchange at Hyakugo Bank
Hyakugo Bank Ueno Branch

MAP-D
- [Currency List]**
US Dollar (USD), Euro (EUR), Australian Dollar (AUD), British Pound (GBP), Canadian Dollar (CAD), Singapore Dollar (SGD), Swiss Franc (CHF), New Zealand Dollar (NZD), Hong Kong Dollar (HKD), Chinese Yuan Renminbi (CNY), South Korean Won (KRW), Taiwan Dollar (TWD), Thai Baht (THB)

※Please show a valid passport, residence card, etc.

Business Hours(Counter)
9:00-15:00(weekdays only)
Phone 0595-23-7105

Sightseeing Spot

- Iga-ryu Ninja Museum

Japan's only ninja museum, it takes the shape of a late-Edo period mansion with several tricks and devices set up inside. This is the only museum where visitors can get a lively experience of the history and life of Ninja. Agents in Ninja uniform will explain and demonstrate trick devices and traps at Ninja Residence. In the resource center, there are exhibitions of ninja tools such as shuriken and ninja sword, and also the place where you can learn about the everyday knowledge of ninjas. Moreover, the dynamic art of ninja can be enjoyed at ninjutsu demonstration show (charged as extra fee).

[Business Hours] 9:00-17:00 (last entrance 16:30)
[Entrance Fee] Adult (16 years or older) 700 yen plus tax
Child (4 to 15 years old) 400 yen plus tax
Infants free
[Closed] 12/29-1/1
- Iga Ueno Castle

Iga Ueno Castle is loved as a symbol of the town. Approximately 400 cherry blossom trees bloom fully in Ueno Park, where the castle is located.

[Business Hours] 9:00-17:00 (last entrance 16:45)
[Entrance Fee] Adult (16 years or older) 500 yen
Child (7 to 15 years old) 200 yen
Infants free
[Closed] 12/29-12/31
- Ueno Tenjin Festival & Danjiri Floats Exhibition Hall

Ueno Tenjin Festival, held every year in October, has a history of 400 years. This museum, assuming a storage for danjiri floats, holds on permanent display 3 danjiri floats used in the festival.

[Business Hours] 9:00-17:00
[Entrance Fee] Adult (16 years or older) 500 yen
Child (4 to 15 years old) 300 yen
Infants free
[Closed] 12/29-1/1, either the second or third weekend in April, during the Ueno Tenjin Matsuri
- Ueno Tenjin Shrine

Sugawara no Michizane, the God of learning, is worshipped at this shrine. It is known affectionately by the local residents as "Tenjin-san."
- Iga Kumihimo Braiding Center

Braid has a long history in Iga-Ueno and is one of the local specialty products. You can check tools of braiding are on display and purchase accessories made with kumihimo such as ties, Obijime kimono cords and bracelets. Visitors can get a hands-on experience in making Iga kumihimo braided cords, (there is a fee).

[Business Hours] 9:00-17:00 (lesson available 10:00-16:00)
[Entrance Fee] Free
[Closed] Mondays (Open, if Monday is a holiday)

●Tofu Dengaku

●Grapes

●Pears

●Wagashi, Japanese traditional sweets

●Soy Sauce

●Tsukemono, Japanese pickles

●Miso

●Iga Beef

●Iga Rice

●Iga Sake

●Iga Ware

●Iga Kumihimo Braid

●Ninja Outfit

●Katayaki, portable food for Iga Ninjas

●Postcards

●T-shirts

●Keychains

●Rubber Shuriken

●Iga Local Sake

Iga's Specialty Goods and Popular Items

Popular souvenirs from Iga

Iga's 3 Most Famous Local Goods

Iga's 2 Major Traditional Crafts

Look for this logo!

Iga Brands
The brand Igamono was started in 2016 to certify superior goods representative of Iga.

Souvenir Shop

- 1

Iga-ryu Ninja Museum Shop Ninjabo

Ninja merchandise (keychains, ninja clothing, rubber shuriken, etc.)

☑ 9:00-17:00
Closed during 12/29-1/1

TEL 0595-23-0311

117 Ueno Marunouchi, Iga

CARD

MAP-A
- 2

Rest House Gift Shop

Ninja merchandise (ninja clothing, rubber shuriken, etc.), keychains, Iga sweets, general souvenirs

☑ 10:00-17:00
Closed during 12/29-1/1

TEL 0595-23-8670

Iga City Ueno Marunouchi 117-3

MAP-A
- 3

Iga Local Specialty Products & Gift Shop

Ninja merchandise rubber shuriken, ninja outfits in children's sizes etc. T-shirts, Iga sweets, general souvenirs

☑ 9:00-17:00
Closed during 12/29-1/1

TEL 0595-26-7788

122-4 Ueno Marunouchi, Iga Inside Ueno Tenjin Festival & Danjiri Floats Exhibition Hall

CARD

MAP-B
- 5

Iga-ryu Ninja Specialty Store

Ninja specialty store carrying ninja clothing, shuriken, and swords

☑ 9:00-19:00 (April-August)
9:00-18:00 (September-March)
Closed on Wednesdays, 12/31 and 1/1

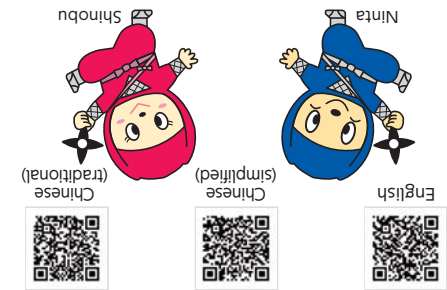
TEL 0595-21-0792

1938 Ueno Atagomachi, Iga

CARD

MAP-D

伊奈美



Iga City official tourist information
— IGA OFFICIAL TRAVEL GUIDE —

The population of Iga City is 93,363 people(as of 3/31/2017)

Located in the northern part of Mie Prefecture, the Iga region has strong ties to Kyoto, Osaka, and Having all of its sides surrounded by mountains and being located in the Iga Basin, Iga has many landmarks and tales related to ninjas.Iga's dialect, food culture, and traditional festivals are largely influenced by the Kinki region.

Welcome to Iga, Mie Prefecture

Welcome to Iga, Mie!

Hello!!

We at the Iga-Ueno Tourist Association are doing everything we can to make sure you have a great time here. Please stop by whenever you like.

Iga Ueno Tourist Information Center(MAP B)

- Location:Ueno Tenjin Festival & Danjiri Floats Exhibition Hall
- Business Hours:8:30-17:15
- Closed Days:12/29-1/1
- ・Sightseeing pamphlets available (Chinese, English)
- ・Information available in multiple languages
- ・Souvenirs for sale
- ・Ninja outfit rental service, etc.

Iga City Tourist Information Desk(MAP B)

- Location:Haitopia Iga 1st Floor
- Business Hours:9:00-17:45
- Closed Days:12/29-1/1

Japan. Endless Discovery.

伊奈美

Welcome to Iga, Mie!

Hello!!

We at the Iga-Ueno Tourist Association are doing everything we can to make sure you have a great time here. Please stop by whenever you like.

Iga Ueno Tourist Information Center(MAP B)

- Location:Ueno Tenjin Festival & Danjiri Floats Exhibition Hall
- Business Hours:8:30-17:15
- Closed Days:12/29-1/1
- ・Sightseeing pamphlets available
- ・Information available in multiple languages (Chinese, English)
- ・Souvenirs for sale
- ・Ninja outfit rental service, etc.

Iga City Tourist Information Desk(MAP B)

- Location:Haitopia Iga 1st Floor
- Business Hours:9:00-17:45
- Closed Days:12/29-1/1

Japan. Endless Discovery.

Located in the northern part of Mie Prefecture, the Iga region has strong ties to Kyoto, Osaka, and Having all of its sides surrounded by mountains and being located in the Iga Basin, Iga has many landmarks and tales related to ninjas.Iga's dialect, food culture, and traditional festivals are largely influenced by the Kinki region.

The population of Iga City is 93,363 people(as of 3/31/2017)



Welcome to Iga, Mie Prefecture